

THE STROMFORD WHITEFIELD BROOK



2 | 

1 | 

1 | 

KEY FEATURES:

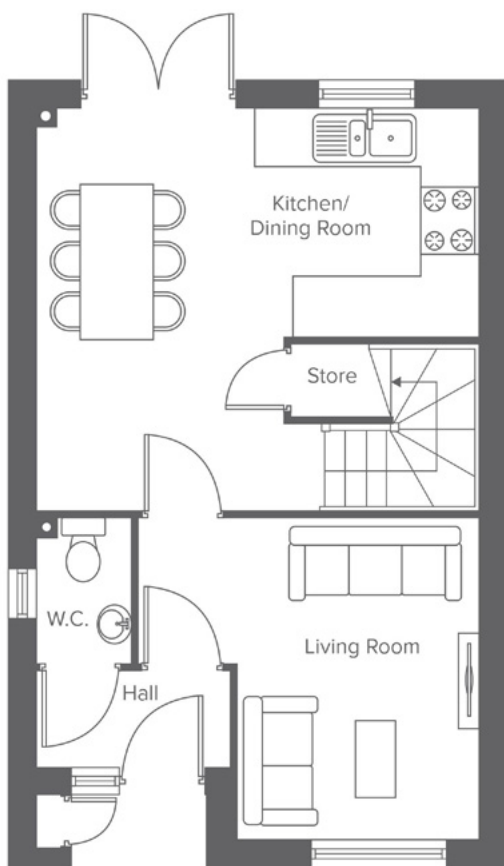
- Two double bedrooms
- Separate lounge
- Kitchen/dining area
- Patio doors to rear garden
- Integrated kitchen appliances
- Downstairs WC



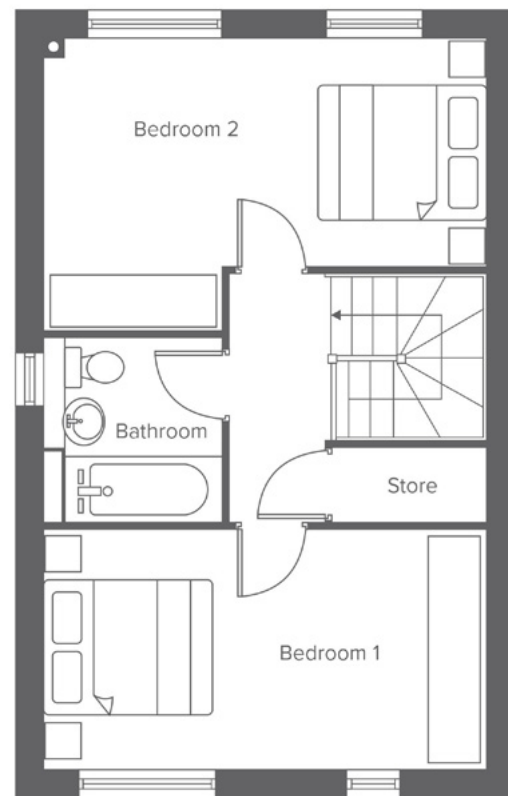
The Stromford
Shared Ownership plots
9, 47, 262

WHITEFIELD DRIVE, KIRKBY, LIVERPOOL L32 4TD
A range of bespoke two, three and four-bedroom homes.

THE STROMFORD WHITEFIELD BROOK




Ground Floor	Metric	Imperial
Kitchen/Dining	4.3 x 4.7	14'1" x 15'5"
Living Room	3.5 x 2.6	11'5" x 8'6"
W.C.	1.0 x 1.5	3'3" x 4'11"





First Floor	Metric	Imperial
Bedroom 1	2.6 x 4.7	8'6" x 15'5"
Bedroom 2	3.1 x 4.7	10'2" x 15'5"
Bathroom	2.0 x 1.9	6'6" x 5'6"


CONTACT OUR TEAM

 0151 601 8934

 yourhousinggroup.co.uk

 @yourhousinggroup

 @Your_Housing

 @yourhousing