

THE THELWALL WHITEFIELD BROOK

3
SEMI-DETACHED
OPTIONS
AVAILABLE

3 | 

1 | 

1 | 



Artist's impression

KEY FEATURES:

- Two double bedrooms and one single bedroom
- Spacious kitchen/diner
- Separate lounge
- Downstairs W.C.
- Integrated kitchen appliances

WHITEFIELD DRIVE, KIRKBY, LIVERPOOL L32 4TD

A range of bespoke two, three and four-bedroom homes.



The Thelwall

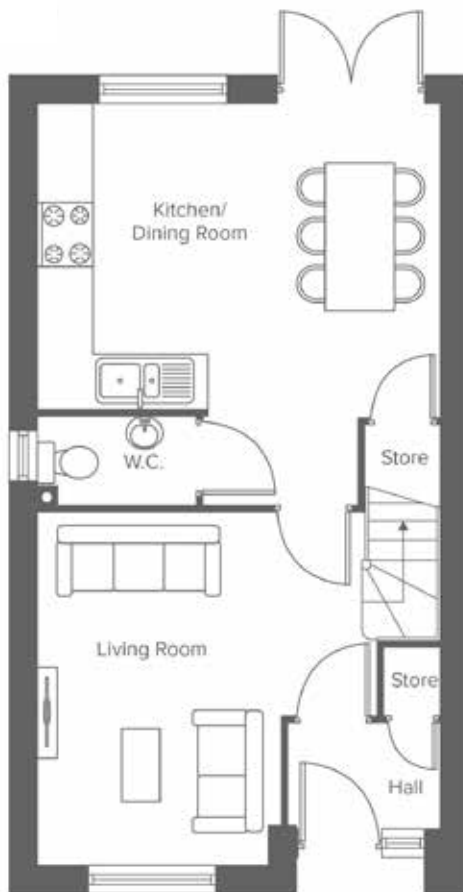
Shared Ownership plots

22, 45, 46, 92, 105, 106, 138, 141, 147-149, 208, 225-227, 233, 249, 263, 265, 266

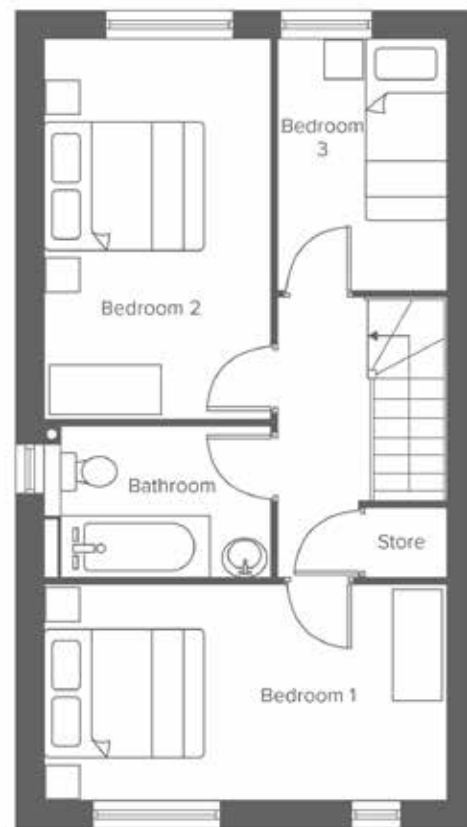
Private Rented plots

6-8, 25, 40, 85, 191, 230, 264

THE THELWALL WHITEFIELD BROOK




Ground Floor	Metric	Imperial
Kitchen / Dining	3.5 x 4.6	11'5" x 15'1"
Living Room	4.0 x 2.6	13'1" x 8'6"
W.C.	1.0 x 1.9	3'3" x 6'2"





First Floor	Metric	Imperial
Bedroom 1	2.5 x 4.6	8'2" x 15'1"
Bedroom 2	4.3 x 2.6	14'1" x 8'6"
Bedroom 3	2.9 x 1.9	9'2" x 6'2"
Bathroom	1.7 x 2.6	5'6" x 8'6"


CONTACT OUR TEAM

 0151 601 8934

 yourhousinggroup.co.uk

 @yourhousinggroup

 @Your_Housing

 @yourhousing