

THE CHORLTON WHITEFIELD BROOK

SEMI-DETACHED
AND TERRACE
OPTIONS
AVAILABLE

2 | 

1 | 

1 | 



Artist's Impression

KEY FEATURES:

- Two double bedrooms
- Separate kitchen
- Living/dining area
- Available as a semi or terrace
- Integrated kitchen appliances
- Downstairs WC

WHITEFIELD DRIVE, KIRKBY, LIVERPOOL L32 4TD

A range of bespoke two, three and four-bedroom homes.



The Chorlton

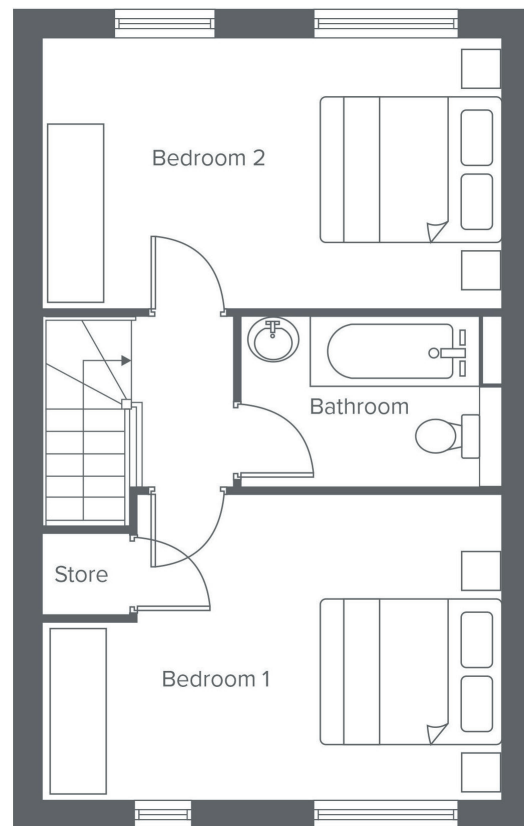
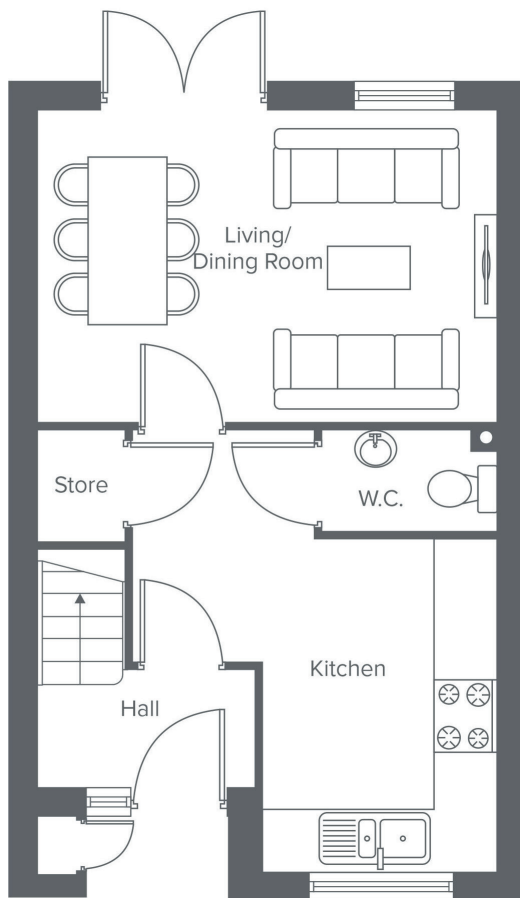
Shared Ownership plots

23, 24, 75, 76, 81, 82,
97, 109, 110, 133, 134,
139, 140, 177, 178,
193- 202, 247, 248

Rent to Buy plots

77-80, 96, 98, 203, 206,
209-212

THE CHORLTON WHITEFIELD BROOK



Ground Floor

Metric

Imperial

Kitchen	3.3 x 2.4	10'9" x 7'10"
Living/Dining	3.1 x 4.6	10'2" x 15'1"
W.C.	1.0 x 1.7	3'3" x 5'6"

First Floor


Metric


Imperial


Bedroom 1	3.0 x 4.6	9'10" x 15'1"
Bedroom 2	2.6 x 4.6	8'6" x 15'1"
Bathroom	1.7 x 2.6	5'6" x 8'6"


CONTACT OUR TEAM

 0151 601 8934

 yourhousinggroup.co.uk

 @yourhousinggroup

 @Your_Housing

 @yourhousing