

THE IRWELL WHITEFIELD BROOK



2 | 

1 | 

1 | 

KEY FEATURES:

- Two double bedrooms
- Separate kitchen
- Living/dining area
- Integrated kitchen appliances
- Patio doors to rear garden
- Downstairs WC

WHITEFIELD DRIVE, KIRKBY, LIVERPOOL L32 4TD

A range of bespoke two, three and four-bedroom homes.



The Irwell

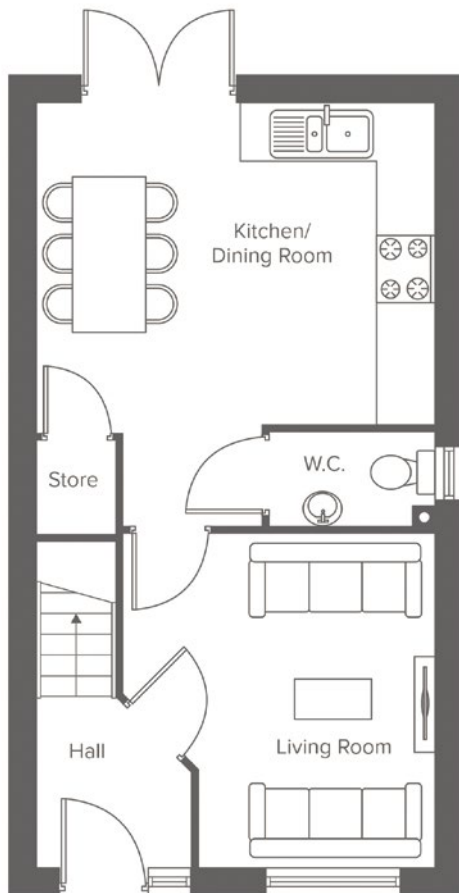
Shared Ownership plots

118, 120, 122, 155, 160,
162, 164, 166, 168

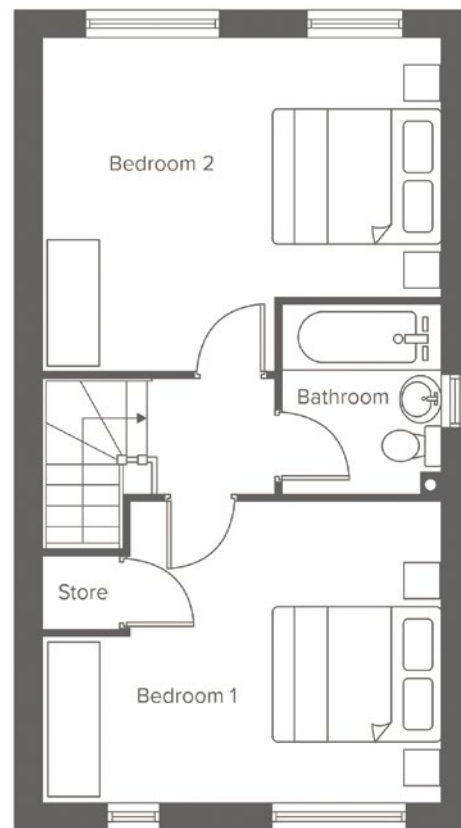
Rent to Buy plots

33, 35, 37, 126, 153, 235,
239, 243

THE IRWELL WHITEFIELD BROOK




Ground Floor	Metric	Imperial
Kitchen	3.4 x 4.3	11'1" x 14'1"
Living / Dining	3.6 x 3.3	11'9" x 10'9"
W.C.	1.0 x 1.8	3'3" x 5'10"





First Floor	Metric	Imperial
Bedroom 1	3.2 x 4.3	10'5" x 14'1"
Bedroom 2	3.5 x 4.3	11'5" x 14'1"
Bathroom	2.0 x 1.7	6'6" x 5'6"


CONTACT OUR TEAM

 0151 601 8934

 yourhousinggroup.co.uk

 @yourhousinggroup

 @Your_Housing

 @yourhousing