

THE EBONY (C) EDGEFIELD GREEN



4 | 

2 | 

1 | 



Artist's impression

KEY FEATURES

- Set over three storeys
- Four double bedrooms
- En-suite from master bedroom
- Downstairs W.C.
- Separate kitchen
- Open plan living/dining area
- Patio doors to rear garden
- Driveway parking



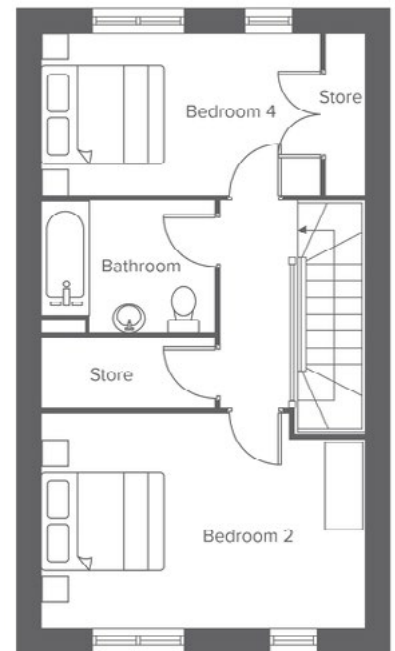
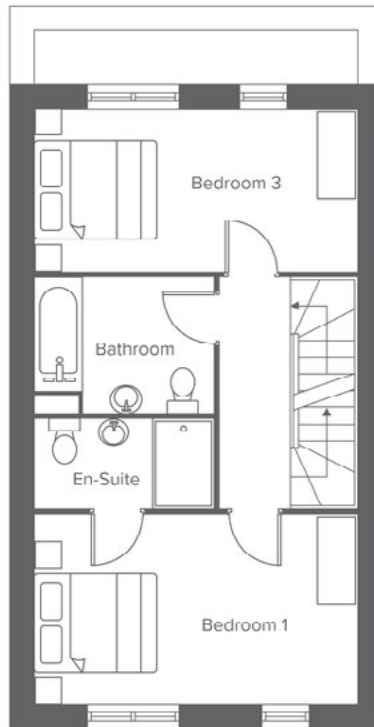
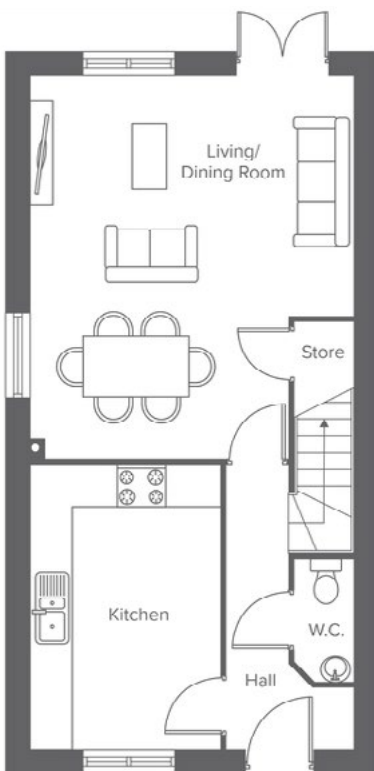
The Ebony (C)
Shared Ownership plots
81, 91, 139, 164, 181,
196, 206

Rent to Buy plots
21-22

EDGE LANE, OPENSHAW, MANCHESTER, M11 1DA
A range of stylish 2, 3 & 4-bedroom houses and 1 & 2-bedroom apartments

THE EBONY (C) EDGEFIELD GREEN

4-bedroom home, sleeps 8



Total size: 130 sqm, 1,400 sqft


Ground Floor	Metric	Imperial
Kitchen	4.2 x 2.8	13'9" x 9'2"
Living/Dining	5.6 x 4.7	18'4" x 15'5"
W.C.	1.8 x 0.9	5'10" x 2'11"


First Floor	Metric	Imperial
Bedroom 1	2.8 x 4.7	9'2" x 15'5"
Bedroom 2	2.4 x 4.7	7'10" x 15'5"
Bathroom	1.9 x 2.6	6'2" x 8'6"
En-Suite	1.3 x 2.6	4'3" x 8'6"


Second Floor	Metric	Imperial
Bedroom 2	3.1 x 4.7	10'2" x 15'5"
Bedroom 4	2.4 x 4.1	7'10" x 12'5"
Bathroom	1.9 x 2.5	6'2" x 8'2"


CONTACT OUR TEAM

 0161 516 3779

 yourhousinggroup.co.uk

 @yourhousinggroup

 @Your_Housing

 @yourhousing