

# The Haslam St George's Row

3-bedroom home, sleeps 5



3 | 

2 | 

1 | 



Artist's impression

## Key features

- Set over three storeys
- Two double bedrooms
- En-suite from master bedroom
- Downstairs W.C.
- Separate kitchen
- Open plan living/dining area
- Driveway parking

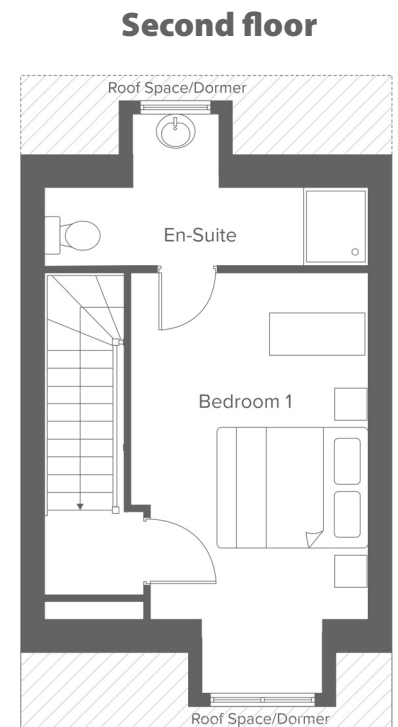
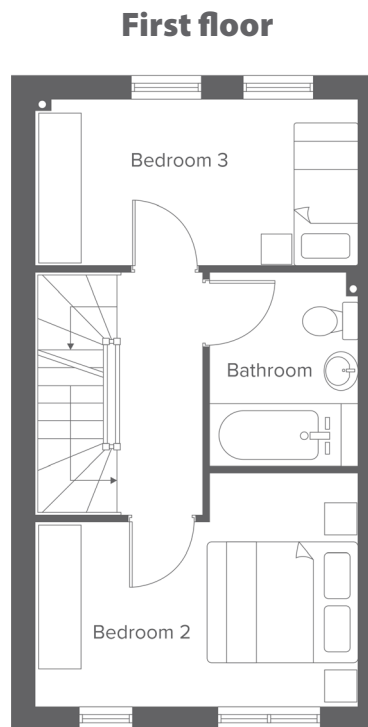
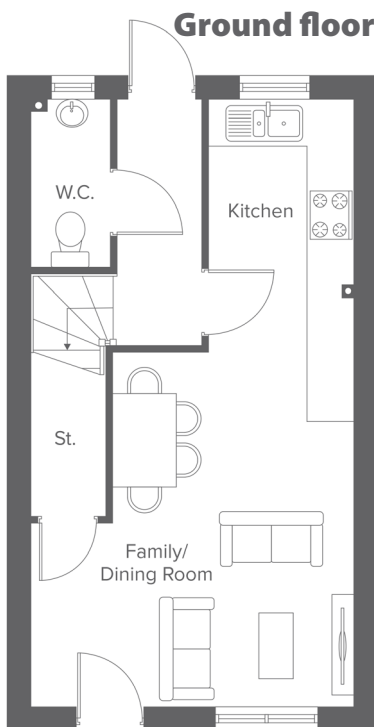


**The Haslam**  
Rent to Buy plots  
B1-B13

**St Georges Row, Pool St, Bolton, BL1 2PF**  
A range of stylish 2, 3 & 4-bedroom town houses

# The Haslam St George's Row

3-bedroom home, sleeps 5




**Total size: 91.8 sqm, 988 sqft**


Ground Floor	Metric	Imperial
Kitchen/Living	7.9 x 4.2	26'0" x 13'10"
W.C.	2.1 x 1.0	6'10" x 3'3"

First Floor	Metric	Imperial
Bedroom 2	3.0 x 4.2	9'10" x 13'9"
Bedroom 3	2.1 x 4.2	6'10" x 13'9"
Bathroom	2.5 x 1.9	8'2" x 6'2"


Second Floor	Metric	Imperial
Bedroom 1	4.0 x 2.7	13'1" x 9'10"
En-Suite	1.5 x 3.8	4'11" x 13'9"


**Contact our team**

 01204 208 315

 [yourhousinggroup.co.uk](http://yourhousinggroup.co.uk)

 @yourhousinggroup

 @Your\_Housing

 @yourhousing